



FOR IMMEDIATE RELEASE

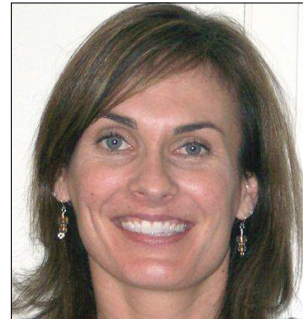
## Beth Benson named Director of Franchise Development

### Industry pro will spearhead Marshall Face2Face expansion.

MARCH 1, 2010 — ENCINO, CA

To provide initial and ongoing guidance for potential and new franchisees, Marshall Face2Face has announced the appointment of Beth Benson to the position of Director of Franchise Development.

Over the past six years, Benson has held key positions with varied franchise-industry organizations. These include Director of Franchise Sales for Grease Monkey International; Senior Development Consultant for Franchise Dynamics, the nation's first full-service franchise sales outsourcing firm; and Franchising Sales Director for Monkey Bizness, a chain of children's amusement/activity facilities.



"In addition to her insider's knowledge of the franchising industry, Beth has a dynamic set of communications/marketing skills that dovetails nicely with our existing skillsets," says Bob Marshall, president/ceo of Marshall Face2Face. "Her ability to leverage and synthesize traditional and new-media channels will also be a major benefit."

A graduate of the University of Denver, Benson began her career in the nonprofit sector with the Muscular Dystrophy Association. Her extensive background includes expertise in commercial real estate, finance and construction; along with fundraising and community relations.

#### CONTACT:

Beth Benson • 720.878.4282 • [beth.benson@marshallface2face.com](mailto:beth.benson@marshallface2face.com)

**[marshallface2face.com](http://marshallface2face.com)**

*Marshall Face2Face is an affordable outsource partner — for lead generation and appointment securement — with the power to revolutionize an enterprise's business development strategy. Visit us online to learn more about our field-proven system, and about how we can tailor a program to meet your needs.*